

Port of San Diego

Shellfish & Seaweed Program: Discussion Draft Sets the Stage

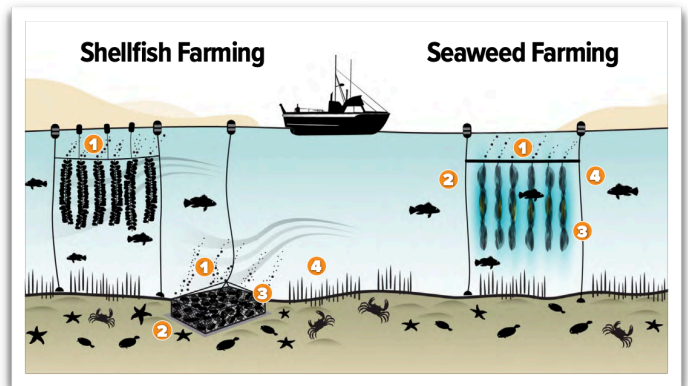
The Latest: Port Seeks Feedback on Aqua Siting

What is the SSAP?

- ▶ The port has released a discussion draft on its proposed Shellfish & Seaweed Aquaculture Program (SSAP).
- ▶ The program would support and facilitate development of shellfish and seaweed aquaculture in and around San Diego Bay, starting with three in-water and three landside aquaculture operation locations.
- ▶ This discussion draft includes a public comment period that closes October 25, 2024.

Why is the port creating this plan?

- ▶ To engage with stakeholders to better understand whether the proposed program is on track, where there are opportunities for improvement, and where there is support for the program.
- ▶ To bring port resources to the table to reduce the barriers to entry for acquiring



new aquaculture permits and to support the growth and resilience of blue economy industries in the San Diego region, including critical shoreside working waterfront infrastructure.

- ▶ California has not issued a new state lease for shellfish farming since 1993 and has issued one experimental State lease for seaweed.

In 2021, the dock value of California's shellfish aquaculture production exceeded \$7.8 million — not including the economic benefit from jobs or other multipliers.

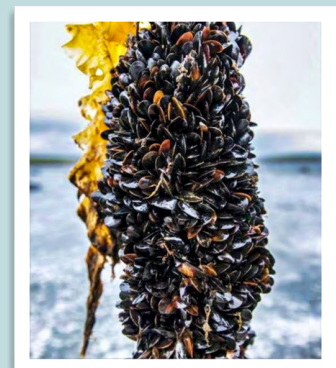
WHICH SPECIES ARE PROPOSED FOR THE PROGRAM?

Native Only | Species proposed for the SSAP are native or naturalized to the San Diego region and include:

Shellfish | Mussels, Oysters & Scallops

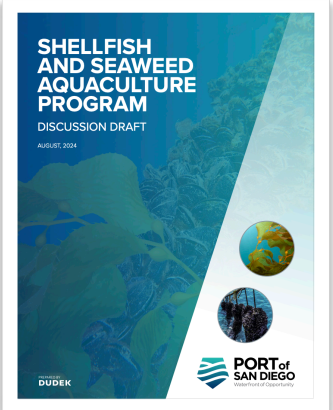
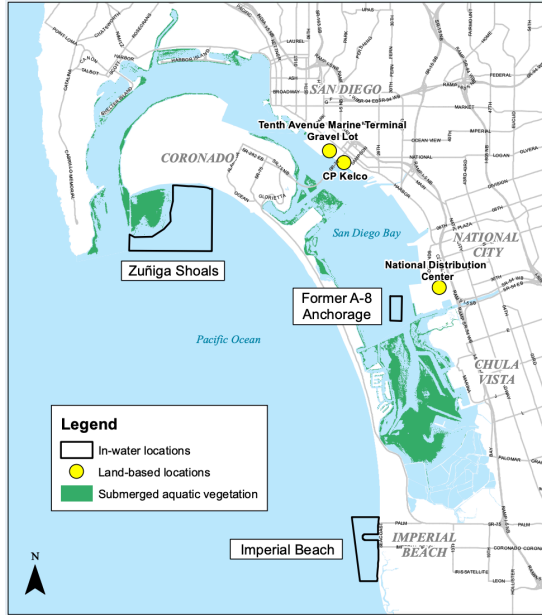
Seaweed | Brown Kelp + Red & Green Seaweed

SOURCE: Port of San Diego SSAP Draft Document



What parts of the bay are being considered?

Proposed locations are illustrated in the figure on the right and described below. However, port leadership notes that these locations are still being evaluated based on stakeholder engagement. Input is critical at this stage in order to establish a baseline of sites and input that will guide the SSAP as moves through the environmental review process.



**Should I give feedback?
YES!**

If you:

Work or play in San Diego regional waters

Buy, sell, or distribute seafood landed or processed in the San Diego region

Are a community stakeholder in San Diego

Are knowledgeable about the local blue economy

Your feedback can help strengthen the program BEFORE it begins the formal process of environmental review.

Strong working waterfronts are critical to our domestic seafood supply, which affects all of us.

- LANDSIDE LOCATIONS under consideration
 - Existing infrastructure at CP Kelco, located on the eastern shore of the Bay, southeast of the Coronado Bridge;
 - A gravel lot adjacent to, and outside the Tenth Avenue Marine Terminal; and
 - A warehouse (currently vacant) at the National Distribution Center, located just east of the National City Marine Terminal and Pasha Automotive Services.

- IN-WATER LOCATIONS under consideration
 - Up to 270 acres of open ocean areas west of Imperial Beach;
 - Up to 80-acres west of the National City Marine Terminal formally designated as the Former A-8 Anchorage; and
 - Up to 945 acres of nearshore open-ocean area, adjacent to San Diego Bay, known as Zuñiga Shoals, south of Zuñiga Jetty.

Where can I find more information?

Check out the port's Aquaculture Development page at portofsandiego.org/waterfront-development/aquaculture.

1

COMMENT DEADLINE

Friday, October 25, 2024

2

SUBMIT VIA EMAIL

SSAP@portofsandiego.org

3

QUESTIONS?

Email queries to SSAP@portofsandiego.org & daniel@junipersa.com